


# PRODUCT SHEET

## Description:

Floor Spring "Hekla" W/Fixed Spindle, 116DG Opening, Max Weight: 135Kg, Max Door Width: 1100mm, Size: 50x295X106mm, 2-Point Speed Adjustment, Fixing at 90° & 270DG, Cover Plate, to be Bought Separately, Similar to Dorma FS80

## Item number:

17.87.200-0

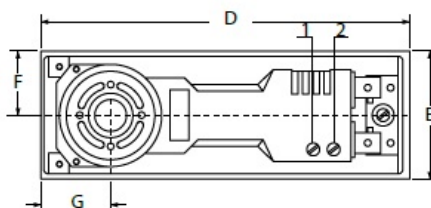
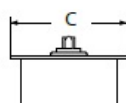
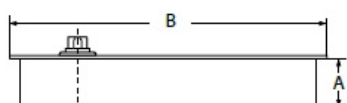
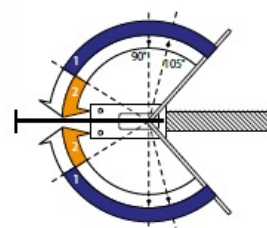
Units	Box	Carton	HS Code	Barcode
Pcs.	1	4	8302415000	
				5704866075015



EN 1154 approved

1 section adjust 90° -25° closing speed  
2 section adjust 25° -0° closing speed

A	B	C	D	E	F	G
50	311	124	295	106	49	53-60



## SISO A/S

Mileparken 11  
DK-2740 Skovlunde  
Denmark  
VAT: DK 24786013

Phone +45 45 830 900

[www.siso.dk](http://www.siso.dk)  
[siso@siso.dk](mailto:siso@siso.dk)

Danske Bank  
Nytorv Branch  
Copenhagen  
SWIFT: DABADKKK

Account no.  
4180 3112 112936  
IBAN Account  
DK7230003112112936